

D

C

B

A

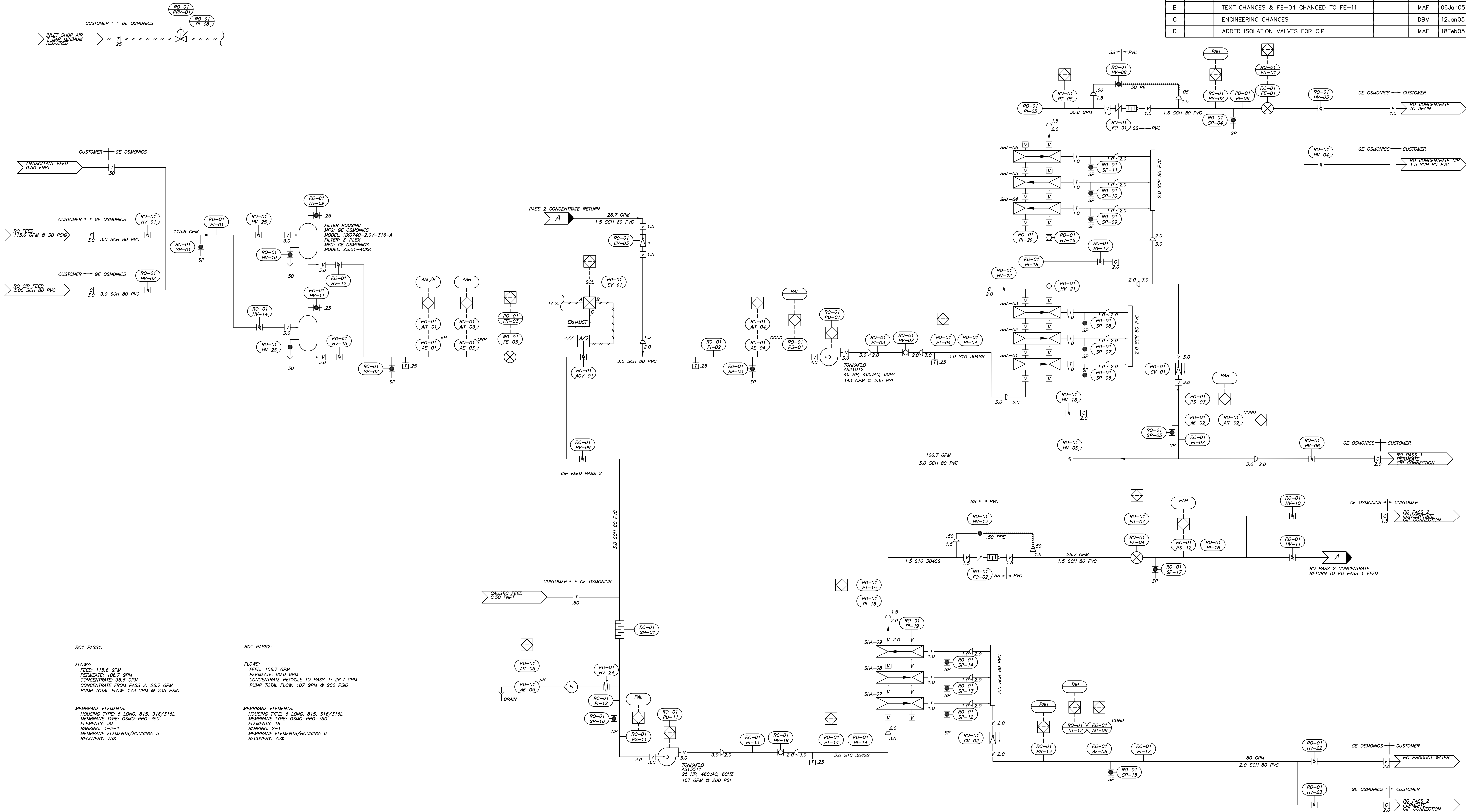
D

C

B

A

REVISION HISTORY						
REV	ZONE	DESCRIPTION	ECO	DWN	DATE	APVD
A	-	INITIAL RELEASE	-	-	-	-
B	-	TEXT CHANGES & FE-04 CHANGED TO FE-11	-	MAF	06Jan05	MAF
C	-	ENGINEERING CHANGES	-	DBM	12Jan05	MAF
D	-	ADDED ISOLATION VALVES FOR CIP	-	MAF	18Feb05	MAF



RO1 PASS1:

Flows:  
Feed: 115.6 GPM  
Permeate: 106.7 GPM  
Concentrate: 35.6 GPM  
Concentrate from Pass 2: 26.7 GPM  
Pump Total Flow: 143 GPM @ 235 PSIG

Membrane Elements:  
Housing Type: 8 LONG, 815, 316/316L  
Membrane Type: OSMO-PRO-350  
Elements: 30  
Banking: 3-2-1  
Membrane Elements/Housing: 5  
Recovery: 75%

RO1 PASS2:

Flows:  
Feed: 106.7 GPM  
Permeate: 80.0 GPM  
Concentrate Recycle to Pass 1: 26.7 GPM  
Pump Total Flow: 107 GPM @ 200 PSIG

Membrane Elements:  
Housing Type: 8 LONG, 815, 316/316L  
Membrane Type: OSMO-PRO-350  
Elements: 18  
Banking: 2-1  
Membrane Elements/Housing: 6  
Recovery: 75%

NOTICE ON REPRODUCTIONS			
THIS DRAWING, THE DESIGN AND THE PATENTS IT COVERS, ARE THE PROPERTY OF GE OSMONICS. THEY ARE LOANED MERELY AND ON THE BORROWER'S EXPRESS AGREEMENT THAT THEY WILL NOT BE REPRODUCED, COPIED, LOANED, EXHIBITED, NOR USED EXCEPT IN THE LIMITED WAY AND THE PRIVATE USE PERMITTED BY WRITTEN CONSENT GIVEN BY THE LENDER TO THE BORROWER.			
MATERIAL	TOLERANCES UNLESS NOTED		
FINISH	FRAC	DECIMALS	ANGLES
	±	.X ±	±
		.XX ±	
		.XXX ±	
ORDER NO.	DWN	MAF	DATE 14DEC04
CUSTOMER	CHKD	CJC	DATE 20DEC04
CUSTOMER LOC.	APVD	MAF	DATE 20DEC04
DO NOT SCALE	APVD	MBK	DATE 20DEC04



PROCESS & INSTRUMENTATION DIAGRAM RO, OSMO-80GPM-2PASS-PRE			
SIZE	THIRD ANGLE	DWG NO/PN	REV
D		4322466A-953	D
SCALE	NONE	FILE TYPE	SHEET
		ACR2004	1 OF 1